

ARUP



Bernard
van Leer
FOUNDATION

URBAN95initiative

Proximity of Care

A New Approach to Understanding
Early Childhood Development
in Vulnerable Urban Contexts

**1st Assessment
Ciudad Emergente**

Avenida Argentina
Valdivia, Chile



1. SITE OVERVIEW

SITE: AVENIDA ARGENTINA



SITE: AVENIDA ARGENTINA NEIGHBORHOOD

Total Population: 11,525.

Men: 48%

Women: 52%

Pob 0 a 5: 6%

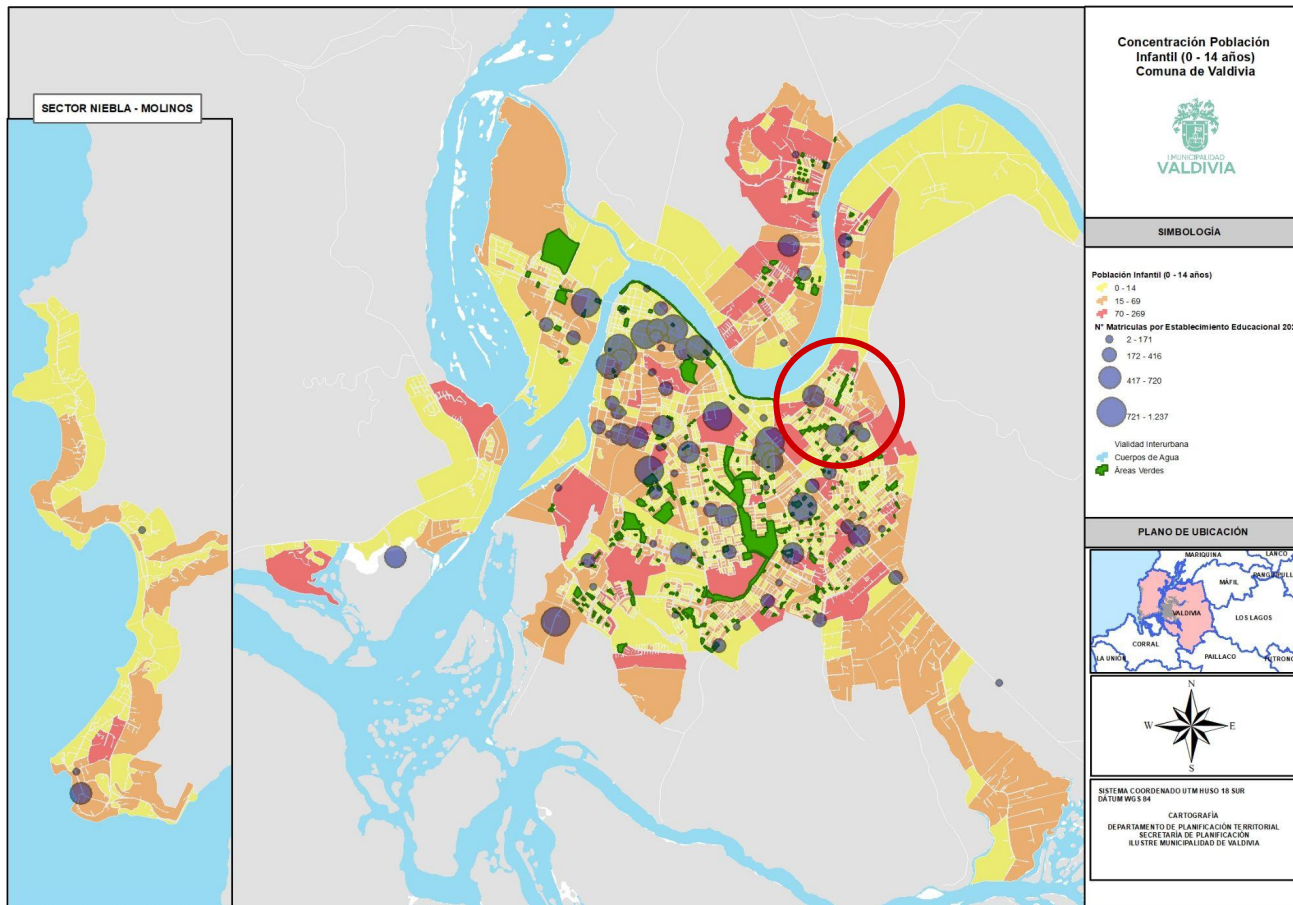
Pob 6 a 15: 10%

Pob 15 a 65: 67%

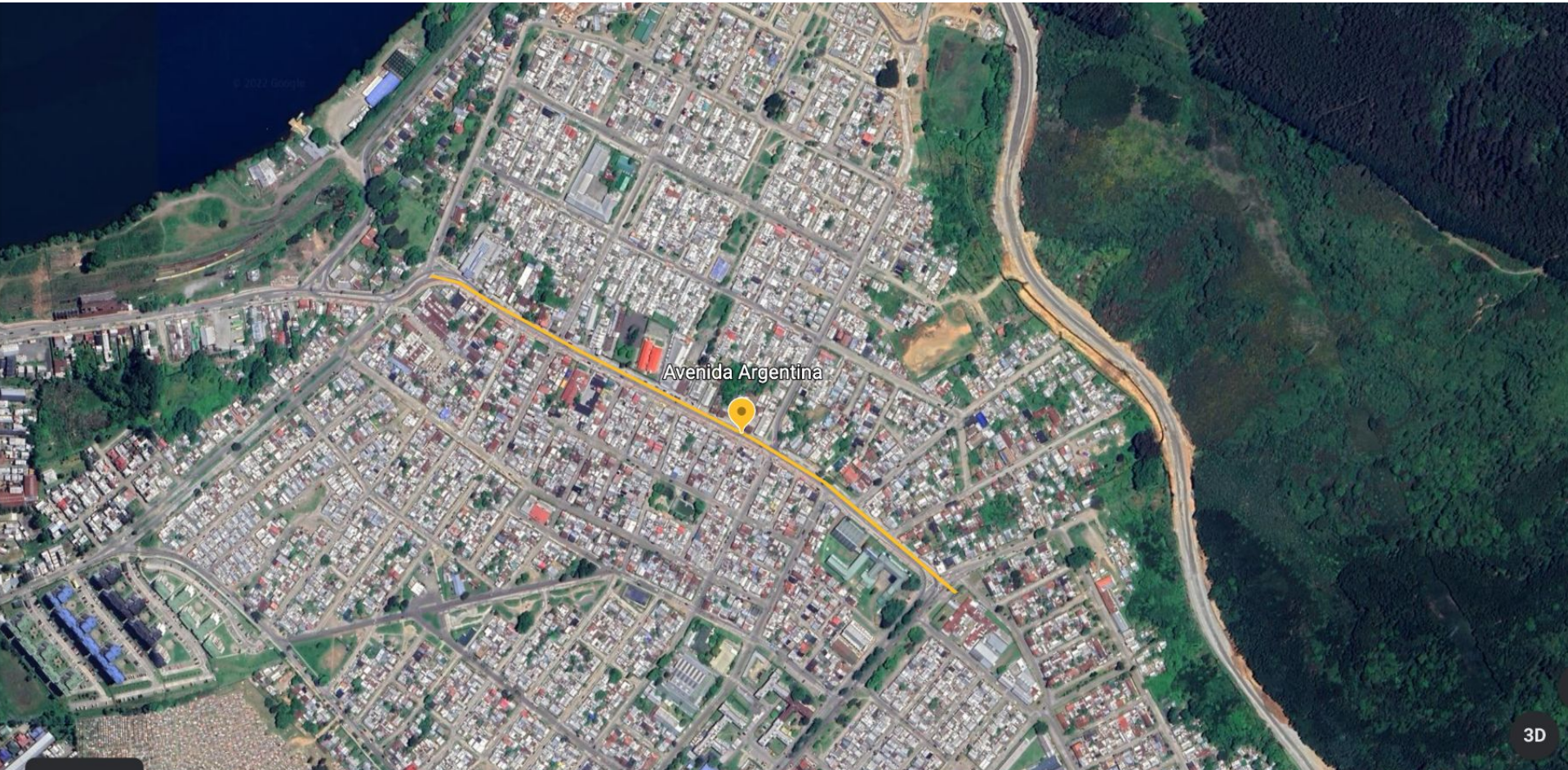
Pob 65 y más: 13%



CHILDREN POPULATION (0-14 YEARS)



SITE: AVENIDA ARGENTINA NEIGHBORHOOD



SITE: AVENIDA ARGENTINA NEIGHBORHOOD



2.

METHODOLOGY

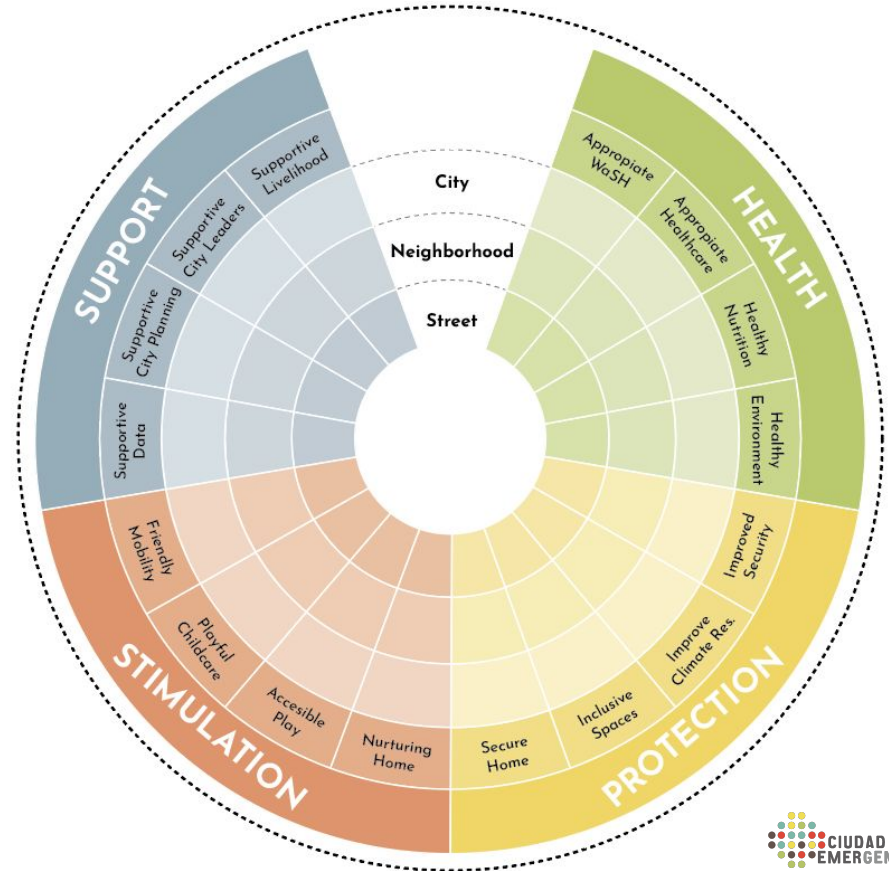
METHODOLOGY: APPROACH

To analyse the site, we relied on the Proximity of Care approach.

Our first step was to review the **4 Dimensions** to select the goals (6), factors (13) and indicators (27) to do the assessment.

Afterwards, each indicator was given a score based on its results: one for survive (red); two for strive (yellow); and three for thrive (green).

The scores also reflect the opinions of the team and all the participants of the different activities done on site.



METHODOLOGY: ASSESSMENT TOOLS

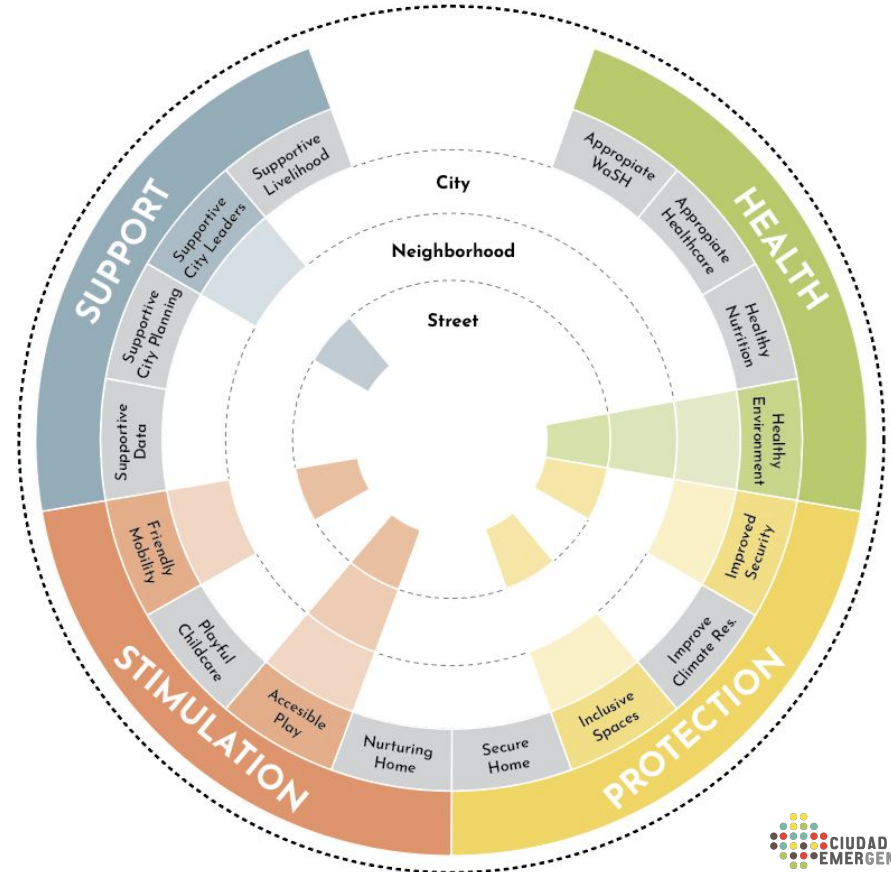
Different tools helped us gather information on different scales:

City:

- Desk-based analysis: data provided by the Municipality, studies, etc.
- Assessment workshop with Municipality.

Neighborhood & Street:

- Transect Walk (12 Quality Criteria)
- Environmental Sensors (AQ and Noise)
- Surveys (Caregivers)
- Focus Group (Preschool teachers)
- Desk-based analysis: data provided by government agencies.



▼ Assessment workshop with Municipality.



▲ Focus group



▲ Survey

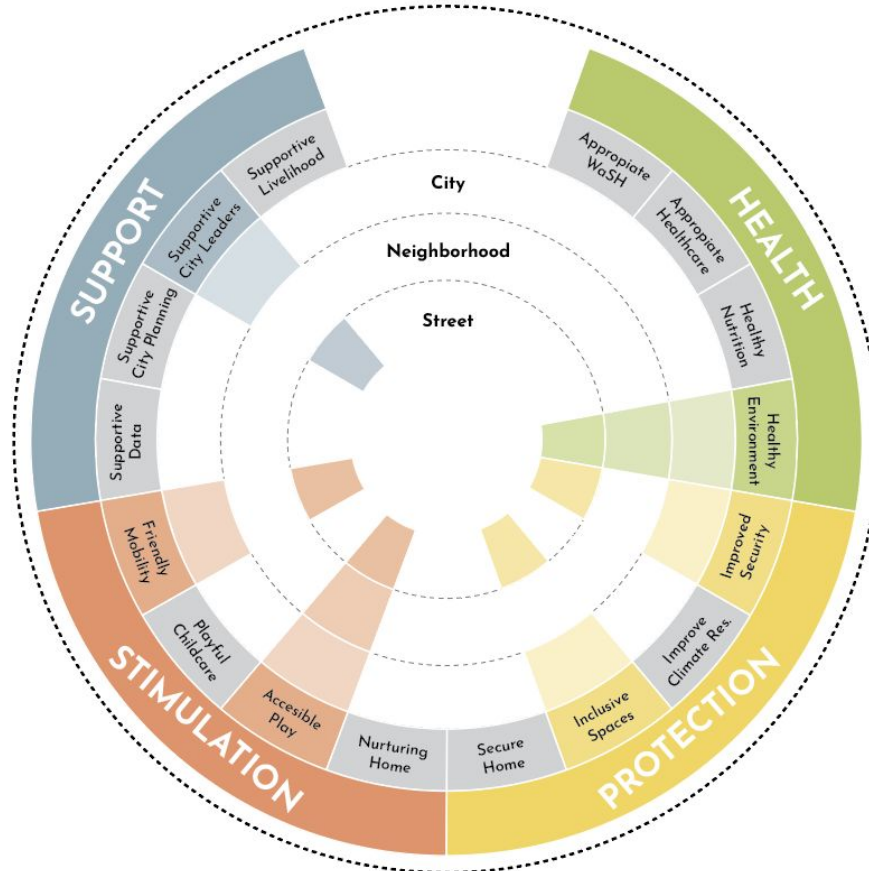
3.

ASSESSMENT

RESULTS

RESULTS: PROXIMITY OF CARE

Surviving
(1/3)



Surviving
(1/3)

Striving
(2/3)

Striving
(2/3)

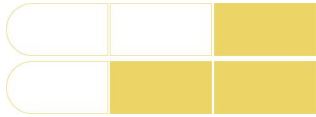
RESULTS: HEALTH



- **Challenge 1:** The perception of insecurity in existing green areas makes it difficult for children and their caregivers to make good use of them. This is mainly due to certain groups that have “taken” the green areas where alcohol and drugs are consumed.
- **Challenge 2:** Over the last year, average PM2.5 daily values were above $15 \mu\text{g}/\text{m}^3$ ($28 \mu\text{g}/\text{m}^3$). Locally, respiratory problems are detected in babies in the afternoons (continuous coughing due to the smog).
- **Challenge 3:** Noise pollution produced by the high flow of private motorized vehicles along Avenida Argentina is a challenge to the health of babies and children. Policies targeting noise don't exist or are unknown. High levels of noise pollution were detected (65 dbA).



RESULTS: PROTECTION



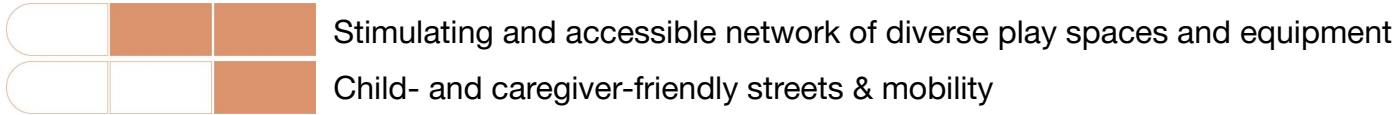
Secure and inclusive network of child-friendly spaces and infrastructure

Improved security

- **Challenge 1:** The high flow of motorized vehicles on Avenida Argentina is a great challenge for the safety of children and their caregivers. Over the last three years, 10 road crashes happened with 7 people suffering minor injuries.
- **Challenge 2:** 74% of caregivers surveyed considered that public spaces in the neighborhood did not suited for children's play. Further, the insecurity of the spaces occupied by people who consume alcohol and drugs in the squares has an impact on the perception of safety.
- **Challenge 3:** The existing infrastructure is wide enough to accommodate pedestrians and cyclists but is constantly occupied by cars.



RESULTS: STIMULATION



- **Challenge 1:** Although schools and public spaces are nearby, the tendency to use squares and public spaces less due to the perception of insecurity is a challenge to the necessary stimulation that babies and children need.
- **Challenge 2:** 61% of caregivers surveyed feel unsatisfied by the quality of public spaces in their neighborhood. This sentiment is shared by municipal workers in the assessment workshop.
- **Challenge 3:** 70% of caregivers surveyed considered the road safety in their neighborhood as “bad” or “very bad”.



RESULTS: SUPPORT



Supportive city leaders

- **Challenge 1:** The urban planning of the neighborhood, and specifically the issue of mobility, has been done prioritizing the movement of vehicles (trucks, buses, buses, cars, etc.) but the necessary attention has not been paid to people and even less to the babies and children.
- **Challenge 2:** 70% of caregivers surveyed feel that their need and those of their children are not taken into consideration by local authorities.
- **Challenge 3:** There is a lack of awareness on early-childhood development policies within the local authorities.

4.

OPPORTUNITIES

RESULTS: HEALTH

- **Opportunity 1:** Valdivia has existing green areas and in the past these had the habit of being well used. There is a concrete opportunity on reversing their deterioration and recovering them.
- **Opportunity 2:** There are many green spaces that can be improved to mitigate the impacts of noise and air pollution in the area.

RESULTS: PROTECTION

- **Opportunity 1:** Improve road safety on Avenida Argentina by implementing measures to reduce speed, eliminate informal parking, and increase the amount of crossings for pedestrians.
- **Opportunity 2:** Transform green vacant spaces for rest and play to improve the perception of safety in the area.

RESULTS: STIMULATION

- **Opportunity 1:** Recover green areas with a focus on play and facilities for babies, toddlers and small children.

RESULTS: SUPPORT

- **Opportunity 1:** There is a work and collaboration agreement between the Municipality of Valdivia and Ciudad Emergente, to promote different actions, projects and programs to improve the quality of life of people, and in particular, of children and their caregivers.
- **Opportunity 2:** The local authorities are very interested in pushing for projects that cater to children and caregivers.
- **Opportunity 3:** The current program is seen as an opportunity to promote policies focused on children and public spaces in the city.



Image 1: CEM and Municipality of Valdivia's agreement of collaboration.
Image 2: President Boric's government program.

ARUP



Bernard
van Leer
FOUNDATION

URBAN95initiative

Proximity of Care

A New Approach to Understanding
Early Childhood Development
in Vulnerable Urban Contexts

1st Assessment Ciudad Emergente

Avenida Argentina
Valdivia, Chile

